

GROUND FLOOR



THE UNIQUE SPACE

This unique building designed by William Hague is strategically located on the N4 Dublin / Sligo Road in the village of Newtownforbes. Its location ensures prominent visibility and just 5 km from Longford Town centre.

50% of the building has been fitted out for office space and the remainder is partially fitted out.

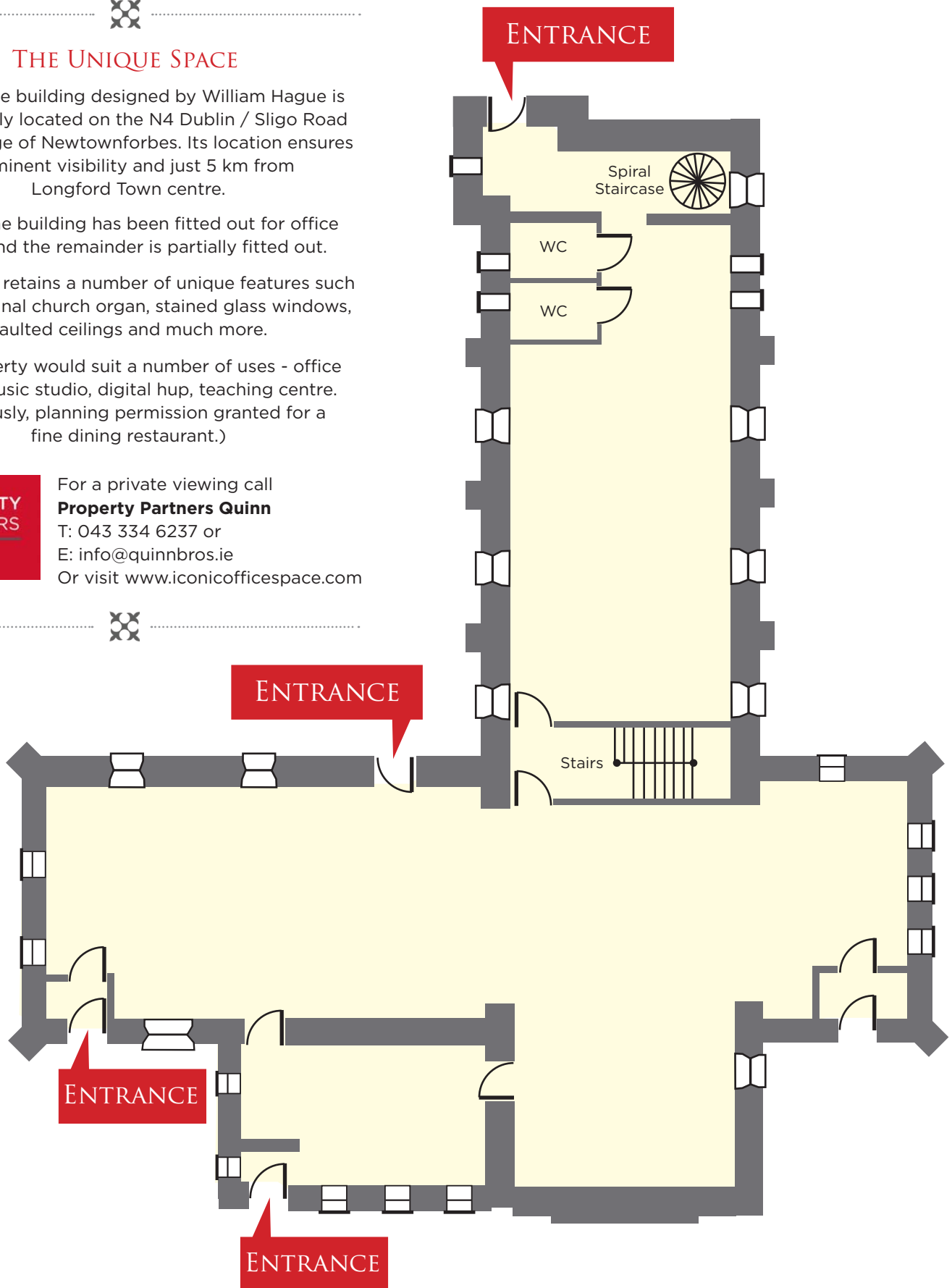
The church retains a number of unique features such as the original church organ, stained glass windows, vaulted ceilings and much more.

The property would suit a number of uses - office space, music studio, digital hub, teaching centre.

(Previously, planning permission granted for a fine dining restaurant.)

PROPERTY PARTNERS
QUINN

For a private viewing call
Property Partners Quinn
T: 043 334 6237 or
E: info@quinnbros.ie
Or visit www.iconicofficespace.com



The Ground Floor

c. 300.4 Sq. meters (c. 3,233 Sq.Ft.)

FIRST FLOOR



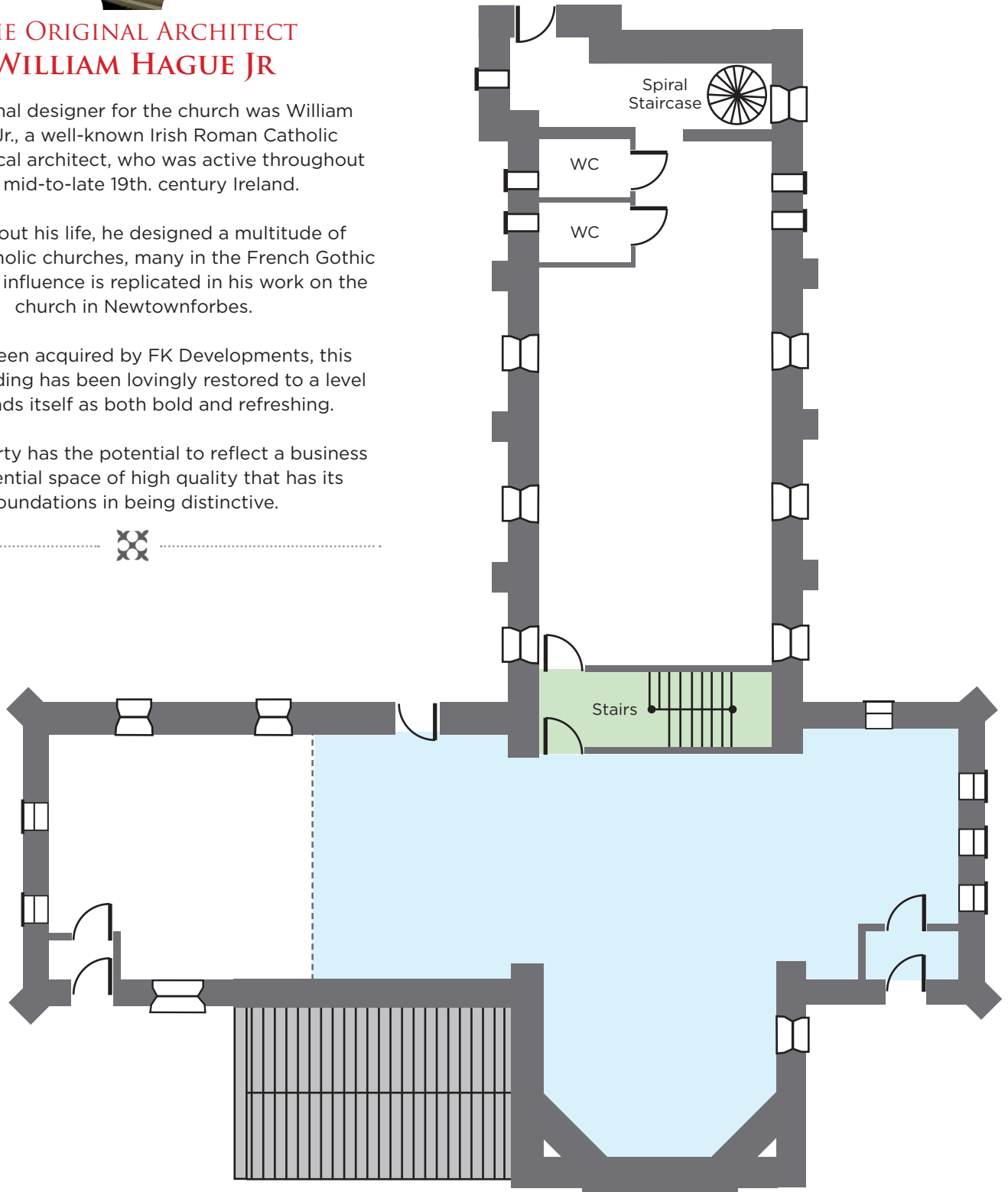
THE ORIGINAL ARCHITECT WILLIAM HAGUE JR

The original designer for the church was William Hague Jr., a well-known Irish Roman Catholic ecclesiastical architect, who was active throughout the mid-to-late 19th. century Ireland.

Throughout his life, he designed a multitude of Roman Catholic churches, many in the French Gothic style. Such influence is replicated in his work on the church in Newtownforbes.

Having been acquired by FK Developments, this iconic building has been lovingly restored to a level that lends itself as both bold and refreshing.

This property has the potential to reflect a business or residential space of high quality that has its foundations in being distinctive.



The First Floor
c. 235.4 Sq. Meters (c. 2,534 Sq.Ft.)